

# PARKER



**HOME STYLE**  
2-Storey

1545 Square Feet

**BEDROOMS**  
3

**BATHROOMS**  
2.5

**LAUNDRY**  
Upper floor

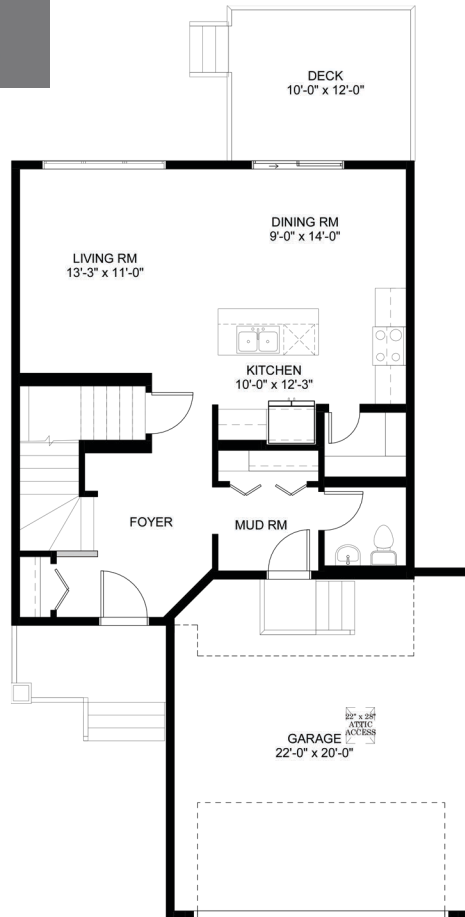
- Open concept layout
- Well appointed kitchen with large center island, stainless steel appliances and walk-in pantry
- Spacious primary suite with ensuite bathroom and large walk-in closet
- 12 x 10 back deck
- 22 x 20 attached double garage
- 30' wide

HOME PRICE

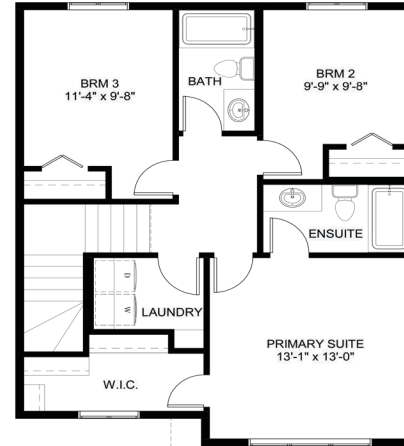
Including Home Site & GST

Home Site Address

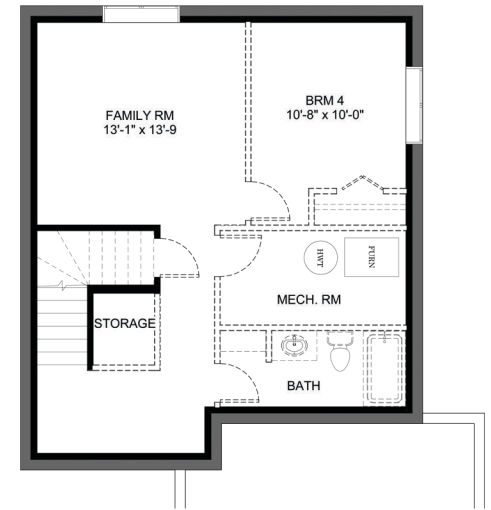
Date



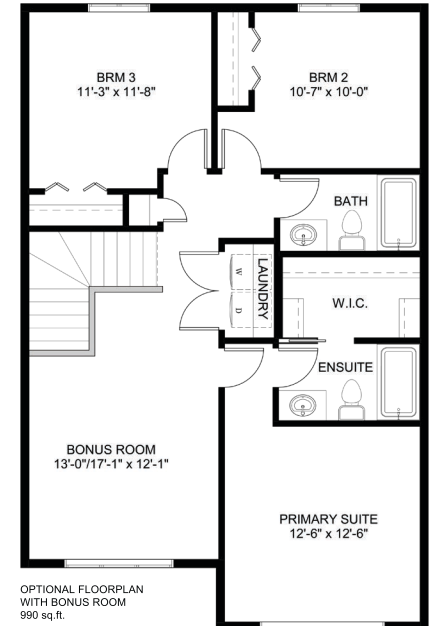
MAIN FLOOR PLAN  
737 sq. ft.



UPPER FLOOR PLAN  
808 sq. ft.



LOWER FLOOR PLAN  
FUTURE DEVELOPMENT  
490 sq. ft.



OPTIONAL FLOORPLAN  
WITH BONUS ROOM  
990 sq. ft.

\*Images are artist's conceptions only and may not exactly represent the base model specifications. Laebon reserves the right to alter or modify the plans and specifications without prior notice

established 1976  
**LAEBON HOMES**

THE SPIRIT OF COMMUNITY

403.346.7273

laebon.com

