

# MARKHAM



**HOME STYLE**  
2 Storey

2182 Square Feet

**BEDROOMS**  
3

**BATHROOMS**  
2.5

**LAUNDRY ROOM**  
Upper floor

**SPECIAL FEATURES**

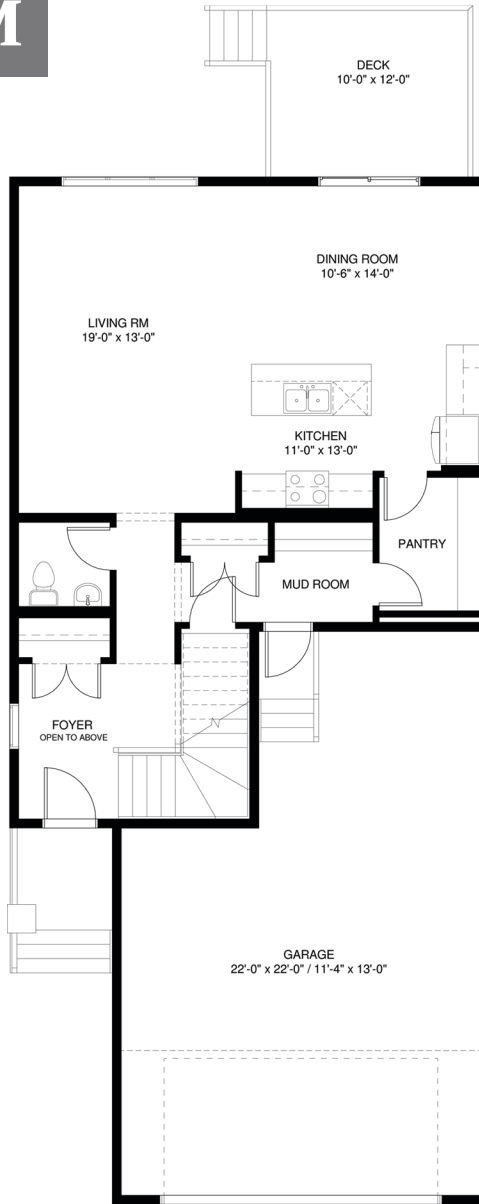
- Locker area in the mud room
- Wood railing on main level stairs
- Grand front entry with foyer open to above
- Large walk-in pantry
- His & her sinks in ensuite
- Make up counter in ensuite
- Drop-in soaker tub in ensuite
- Tandem garage

**HOME PRICE**

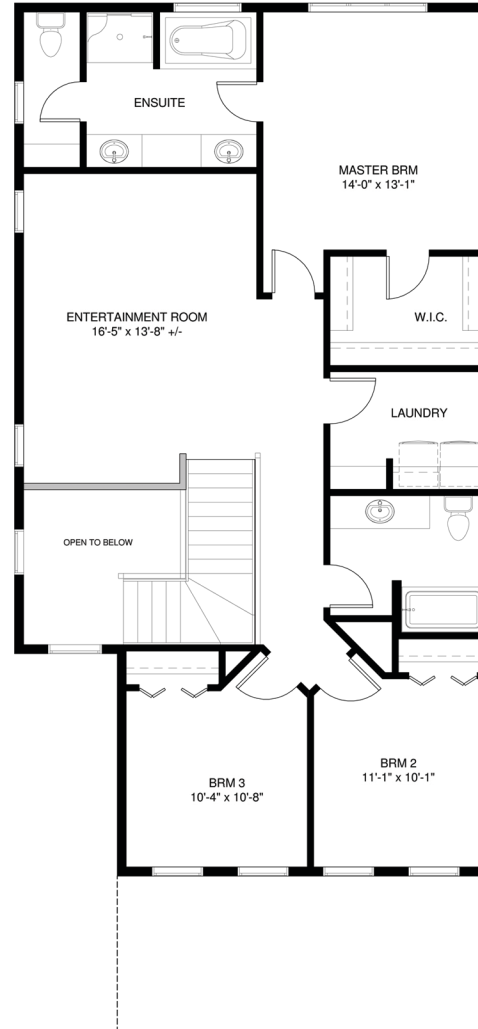
Including Home Site & GST

Home Site Address

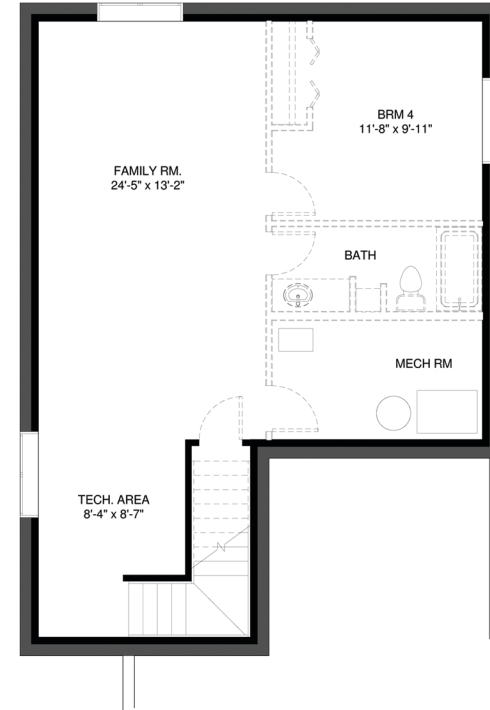
Date



MAIN FLOOR  
909 sq.ft.



UPPER FLOOR  
1273 sq.ft.



LOWER FLOOR  
FUTURE DEVELOPMENT

\*Images are artist's conceptions only and may not exactly represent the base model specifications. Laebon reserves the right to alter or modify the plans and specifications without prior notice. Updated November, 2017

2018 • 2019 • 2021  
**BUILDER OF THE YEAR**  
- LARGE VOLUME -



*established 1976*  
**LAEBON HOMES**  
THE SPIRIT OF COMMUNITY