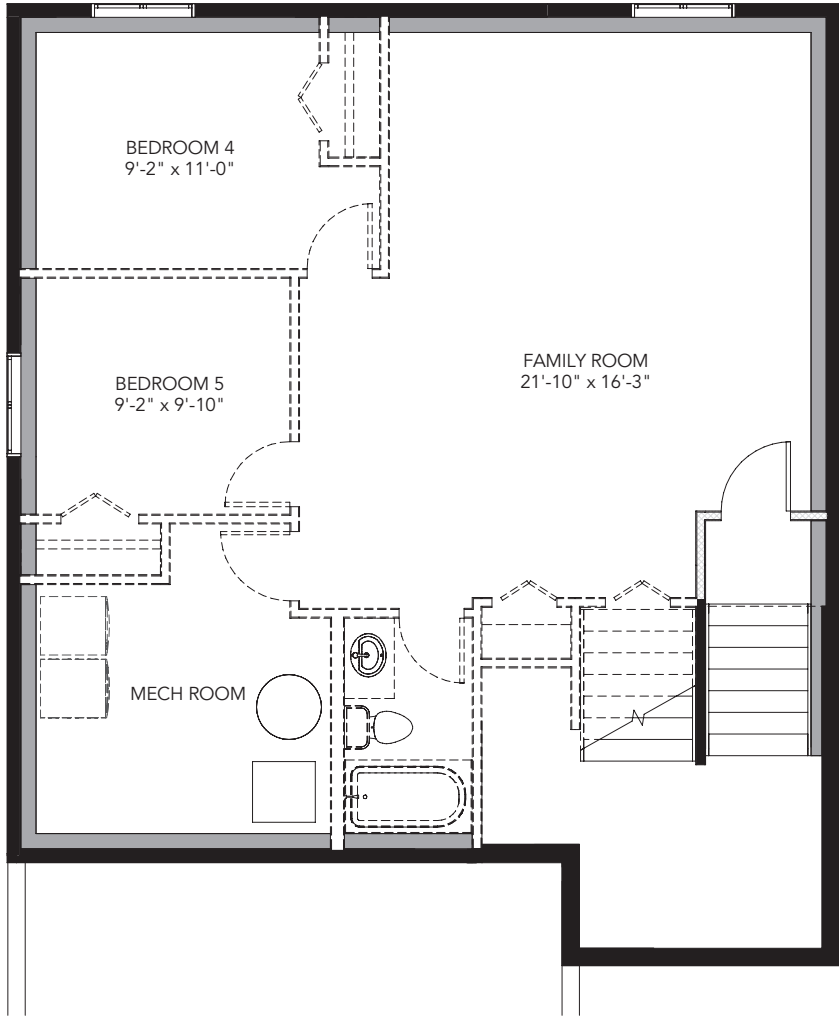


BRIXTON - FLOOR PLAN OPTIONS



LOWER FLOOR FUTURE  
DEVELOPMENT  
716 sq. ft.

www.laebon.com | 403.346.7273



\*All images are artist's conceptions only and many not exactly represent the base model specifications. Laebon reserves the right to alter or modify the plans and specifications without prior notice.



*established 1976*  
**LAEBON HOMES**  
THE SPIRIT OF COMMUNITY

BRIXTON





ARTS & CRAFTS



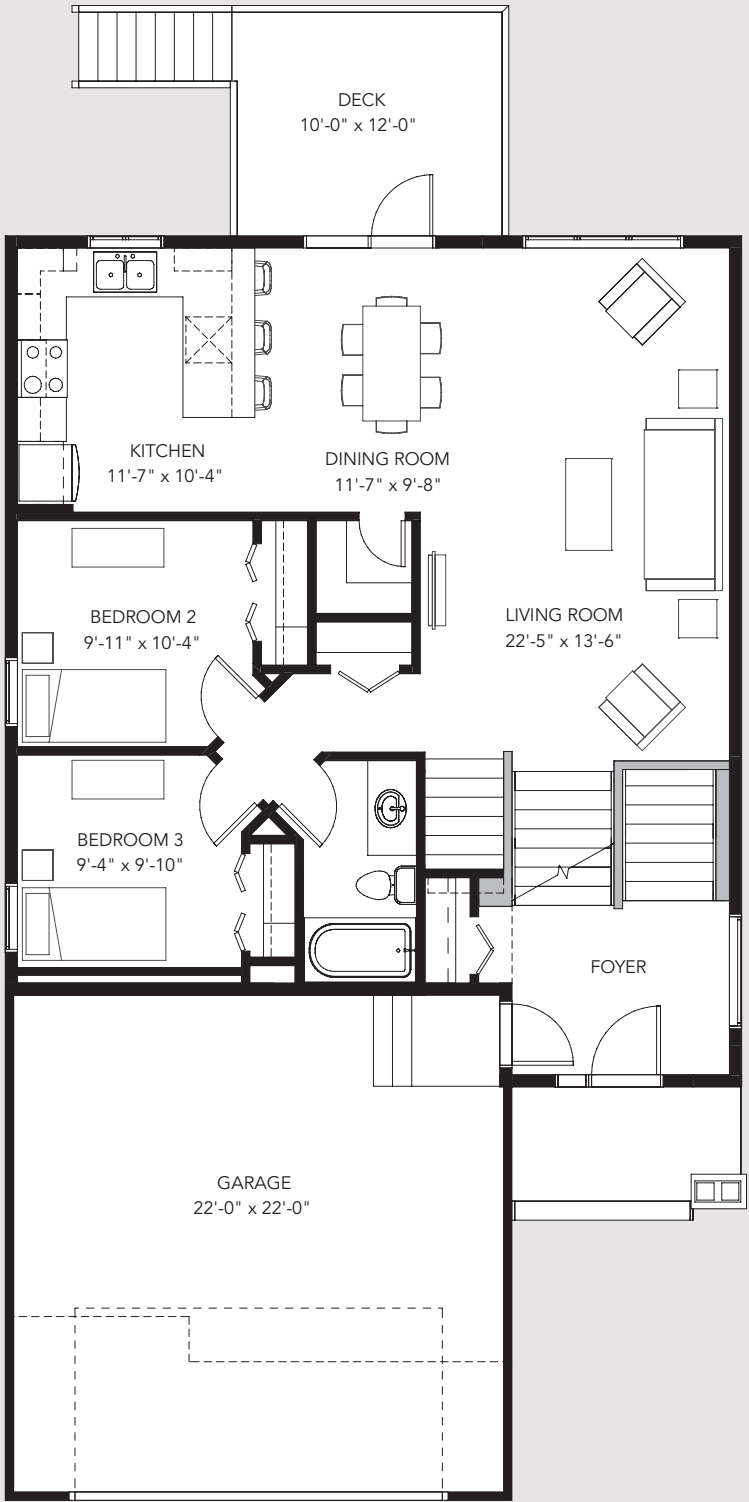
CRAFTSMAN



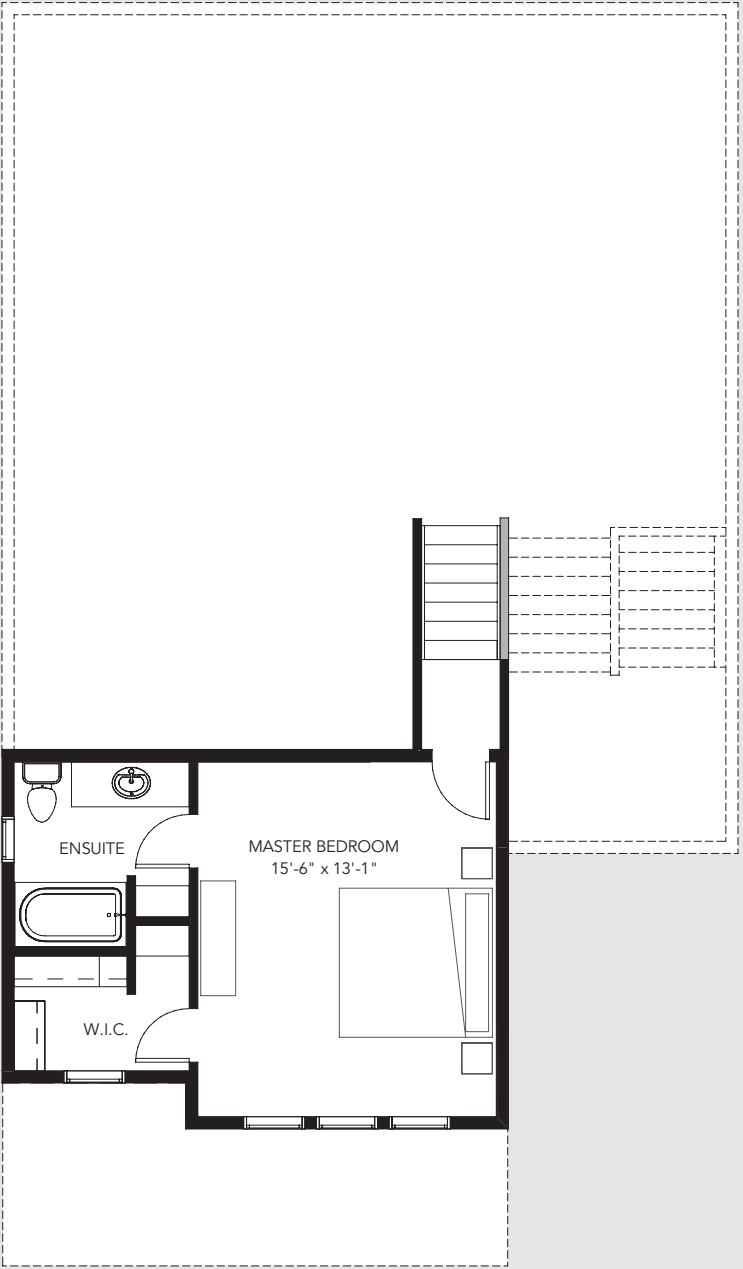
PRAIRIE



COASTAL



MAIN FLOOR  
1098 sq. ft.



UPPER FLOOR  
361 sq. ft.

# BRIXTON

HOME STYLE  
Modified Bi-level

1459 Square Feet

BEDROOMS  
3

BATHROOMS  
2

LAUNDRY ROOM  
Lower floor

CEILING  
9' (main)

32' Wide

HOME PRICE

Including Home Site & GST

Home Site Address

Date