

# HARLOW



## HOME STYLE

2 Storey

1860 Square Feet

3

BATHROOMS  
2.5

LAUNDRY  
Upper floor

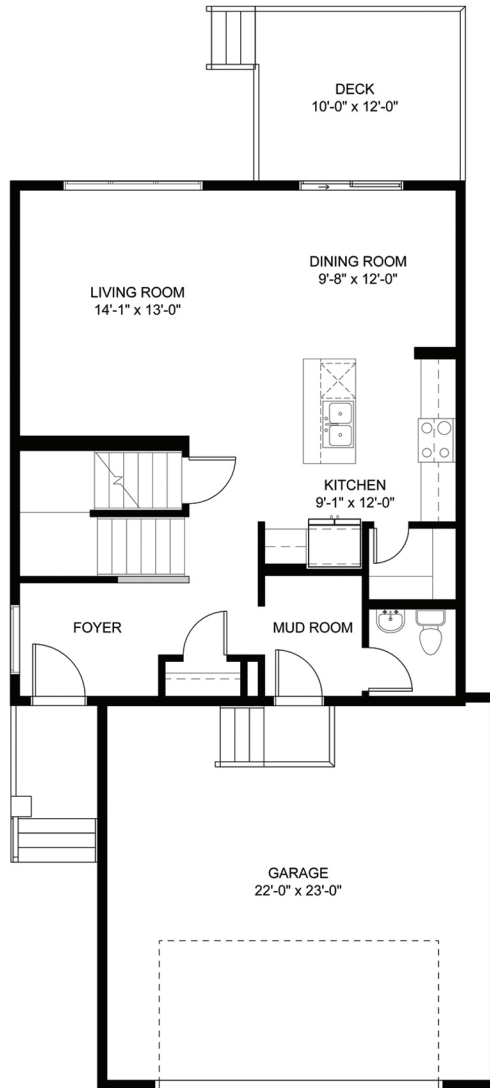
- Modern open concept floorplan
- Well appointed kitchen with large center island, stainless steel appliances and walk-in pantry
- Spacious master suite with ensuite bathroom and large walk-in closet
- Upper floor bonus/entertainment room
- Rear 10x12 deck
- 22' x 23' attached garage
- 28' Wide

## HOME PRICE

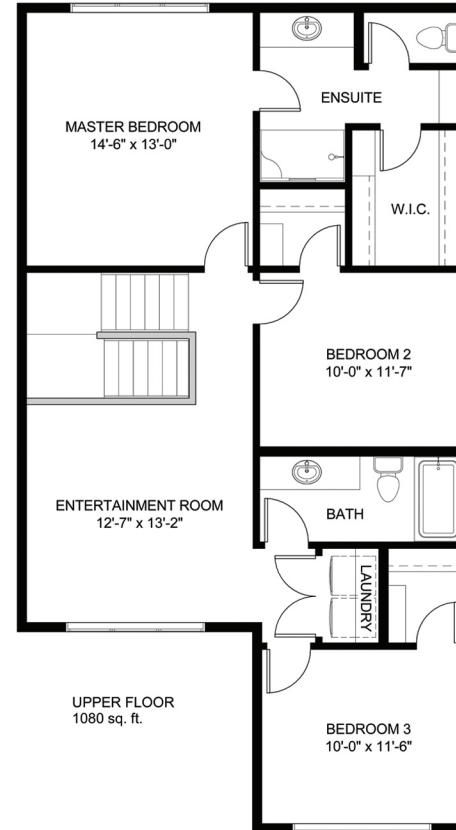
Including Home Site & GST

Home Site Address

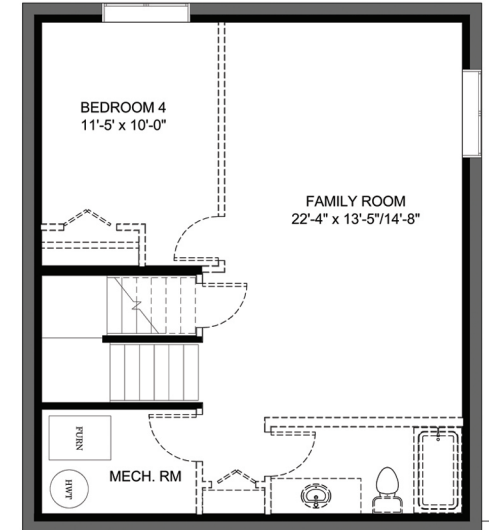
Date



MAIN FLOOR  
780 sq. ft.



UPPER FLOOR  
1080 sq. ft.



LOWER FLOOR  
FUTURE DEVELOPMENT  
529 sq. ft.

\*Images are artist's conceptions only and may not exactly represent the base model specifications. Laebon reserves the right to alter or modify the plans and specifications without prior notice. 12/14/2021

*established 1976*  
**LAEBON HOMES**

THE SPIRIT OF COMMUNITY

403.396.4016

laebon.com

